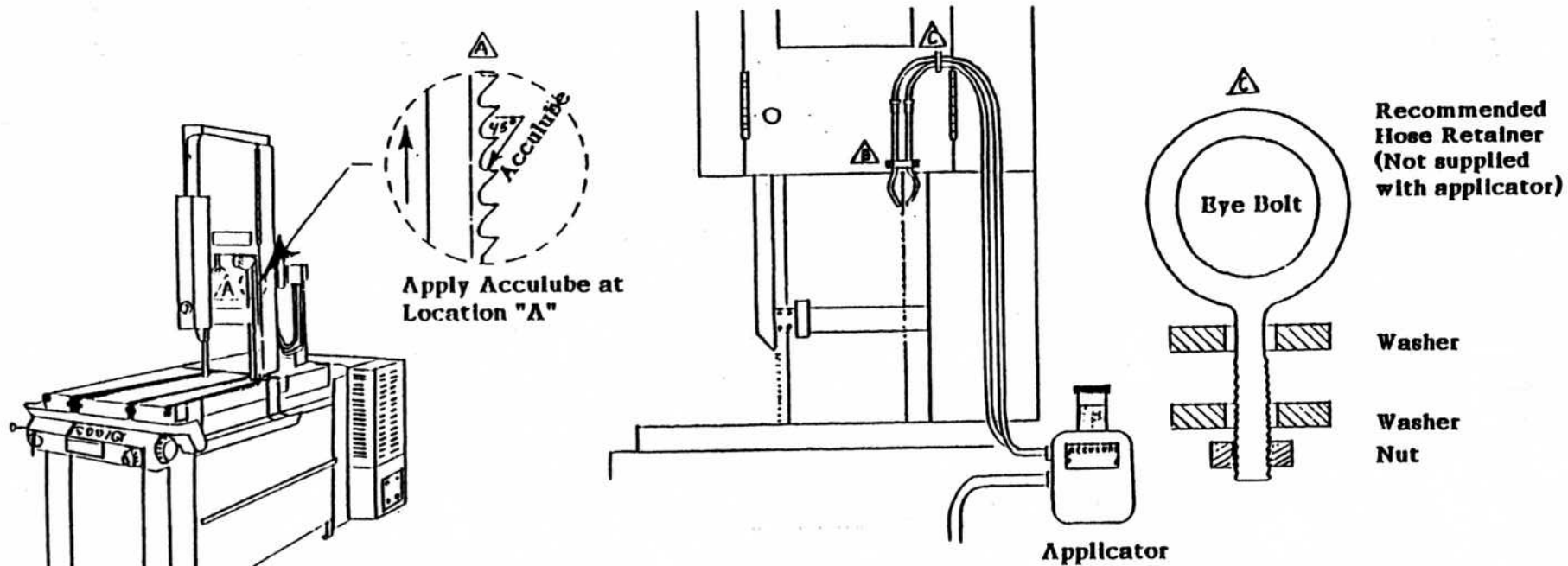
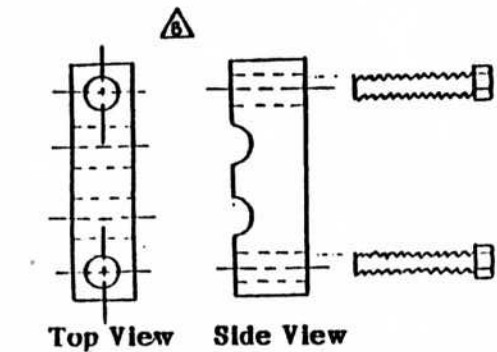
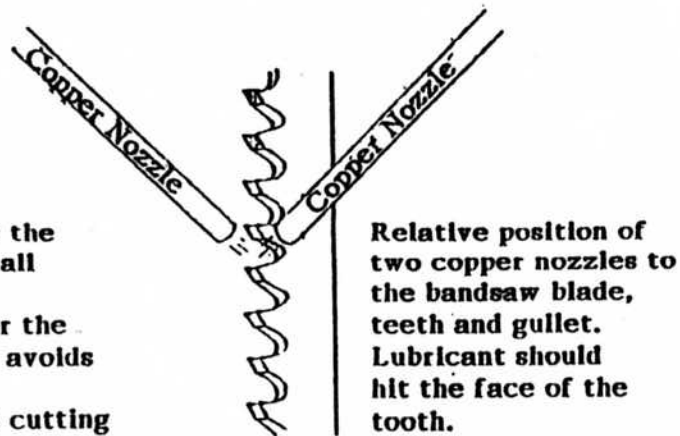


# VERTICAL BANDSAWS



**NOTES:**

1. Lubricating Systems recommends the use of two-nozzle applicators on all bandsaw applications.
2. Nozzles can be mounted wherever the blade is accessible. Position "A" avoids obstruction of the workpiece.
3. The main objective is to coat the cutting edge of each tooth before it enters the cut. The use of two angled nozzles allows for some lubrication on the side of the blade.



**Copper Nozzle Mounting Block**  
(Available for purchase - Part #MTG BLK)